

WARRANTY AND INSTALLATION MANUAL

For compact lifting plants

Thank you for purchasing a product that is produced in Eccua, we believe that our product meets your highest expectations!

WARRANTY

The lifting stations sold by Eccua have a 24-month warranty (except for the pumps installed into the lifting station, which have different warranty terms and conditions). Eccua undertakes to bear elimination of failures under terms and conditions as follows:

- The failure is due to faults of construction or material of the lifting station or incorrect treatment of material;
- ECCUA sales representative has been notified on the failure during the warranty period;
- The product has been used according to instructions of the present manual considering **installation and maintenance** and the product has been used only according to its intended purpose;
- Only the original ECCUA spare parts and accessories are used;

The warranty does not apply for failures that result from insufficient maintenance, improper installation, incorrect repairing or normal wear and tear.

GENERAL INFORMATION

The Edgar lifting station is delivered fully assembled and ready to use, the lifting station is made of polyethylene by rotation moulding. The Edgar lifting station is meant to be used for transfer of sewage, drainage or storm water for private or smaller house groups. The lifting station is developed, manufactured and tested according to the EU standard EN12050.

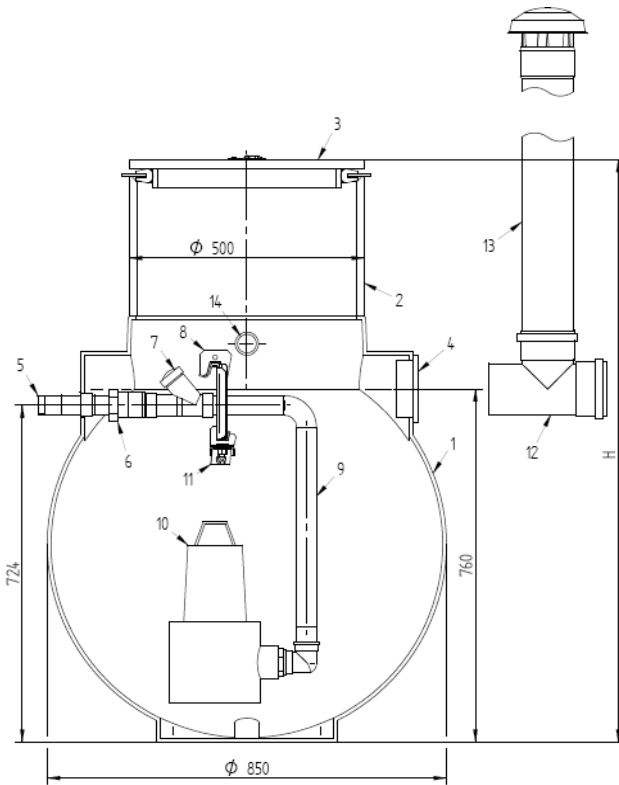
Transportation of the Lifting Station

The lifting station is transported and stored in vertical position. Cover of the servicing well will be mounted only during final installation of the lifting station. In case the station has to be stored for a longer period of time in the open, it must be covered (for instance, with tarpaulin).

It must be ensured that the lifting station does not come to contact with sharp edges or angles. Protect the lifting station from hits and collisions with hard objects. Before installation of the station, make sure that the plastic container and inner tubing are not damaged. Make sure that only suitable lifting devices are used for unloading the lifting station from the transportation mean.



- The lifting station and pumps are delivered separately.
- Never install the pump/pumps before the lifting station is lifted into the trench.



Components:

- | | |
|---------------------------|------------------------------|
| 1. Body | 8. Fast connection for pump |
| 2. Service well | 9. Pressure tubing |
| 3. Smell resistant cover | 10. Pump with cutting system |
| 4. Sealing for inlet pipe | 11. Pump leg holder |
| 5. Outlet pressure pipe | 12. T for ventilation pipe |
| 6. Ball valve | 13. Ventilation pipe |
| 7. Check valve | 14. Cable inlet pipe |

INSTALLATION OF THE PUMPING STATION

General Information

Liability over installation of the lifting station, including mounting the service well, lies upon the contractor.

Installation of the Lifting Station into basement floor

In order to install Edgar lifting station into basement floor a trench (width 1100 mm, height + 50 mm the height of the lifting station, in case of 1500 mm lifting station height the trench has to be $1500 + 50 = 1550$ mm) has to be digged.

The lifting station is installed into a trench, the basis of which is evenly covered with sand in thickness of 50 mm. Sand has to be dry and clean and has to be paddled.

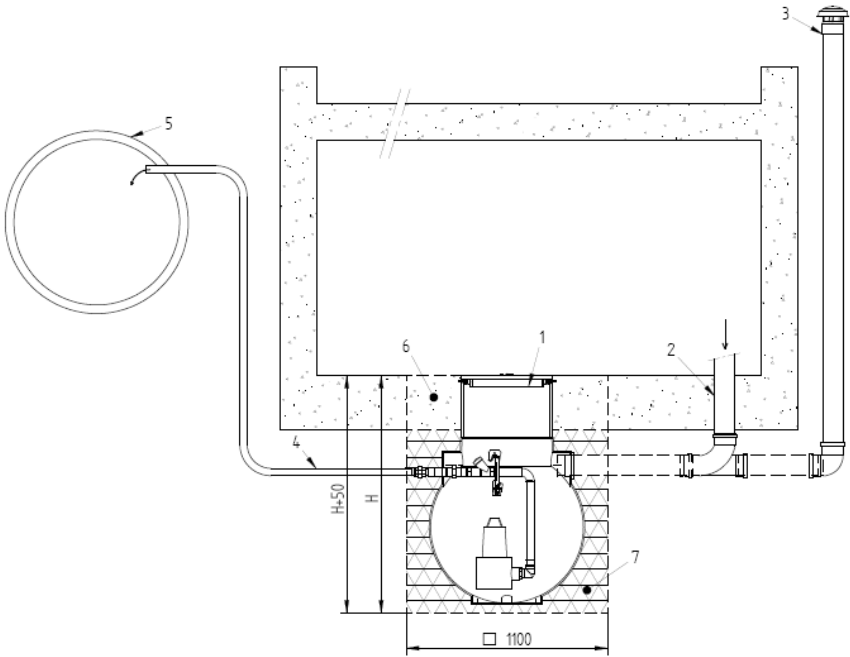
Lifting station has to be placed into trench in such a manner that inlet and outlet pipes are in line with chosen directions.

After the lifting station is in place, rest of the trench has to filled with dry, clean and freely running sand that has to be paddled in layers of 200 mm thickness.

After filling the trench with sand, surroundings of the lifting station has to be concreted, concrete layer has to have at least the same thickness that basement floor.



- During concreting the lifting station has to be prevented from floating upwards;
- Lifting station should be closed off with plastic cover in order to avoid danger that the edge of the tank could be pressed inwards.



Connecting cables

Cables have to be taken out from the cable inlet pipe that is situated in the service well. Cables have to be taken through the cable inlet pipe before final filling of the trench.

Installing ventilation pipe

Ventilation pipe is installed with a bend or a Tee on the inlet pipe depending on the project.



Producer:
Eccua OÜ
Harku tee 3560
76901 Tabasalu
Harjumaa
Tel: +372 6 788 600
e-mail: info@eccua.ee